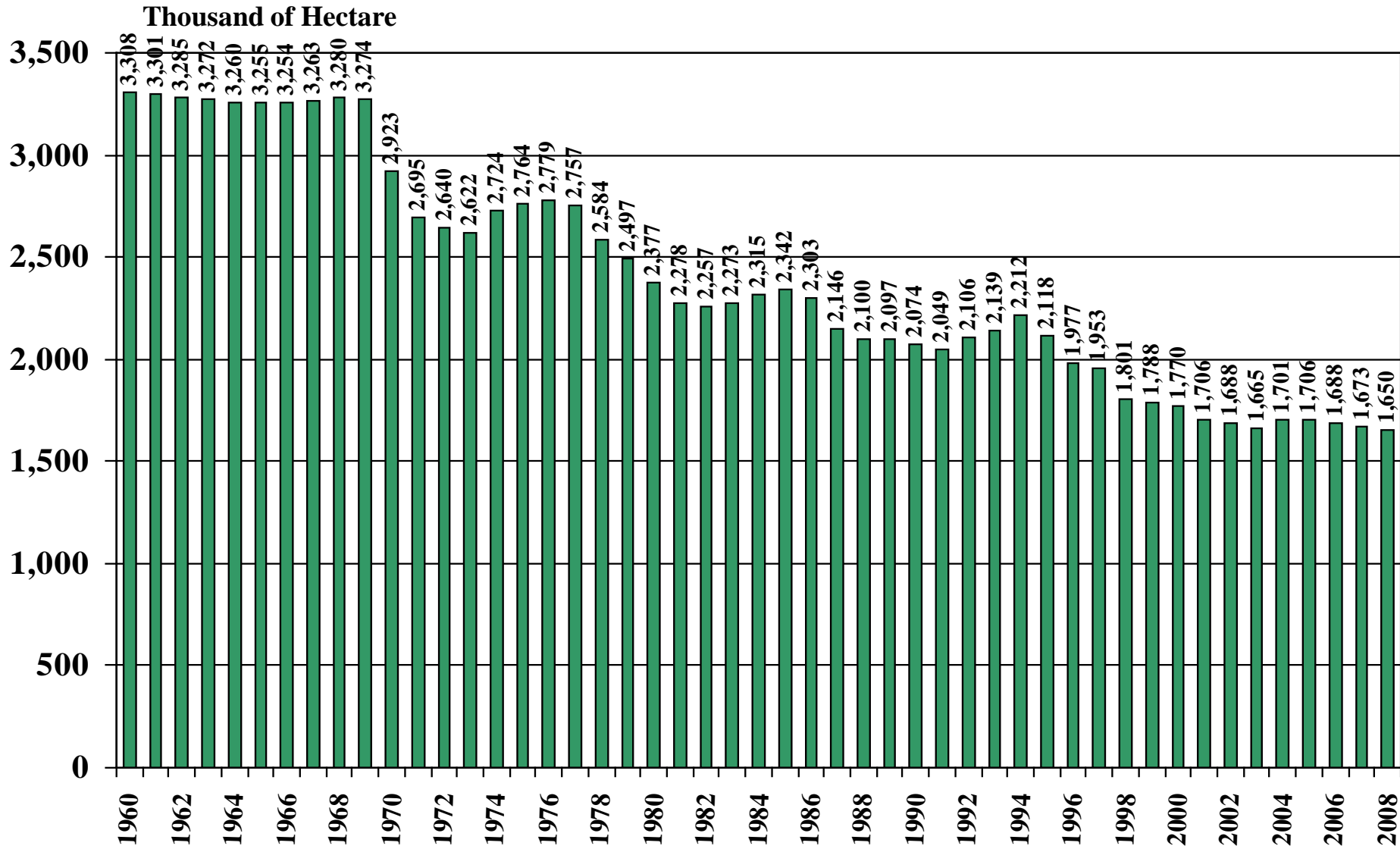


Japan

USDA Supply and Demand Estimates

September 2, 2008

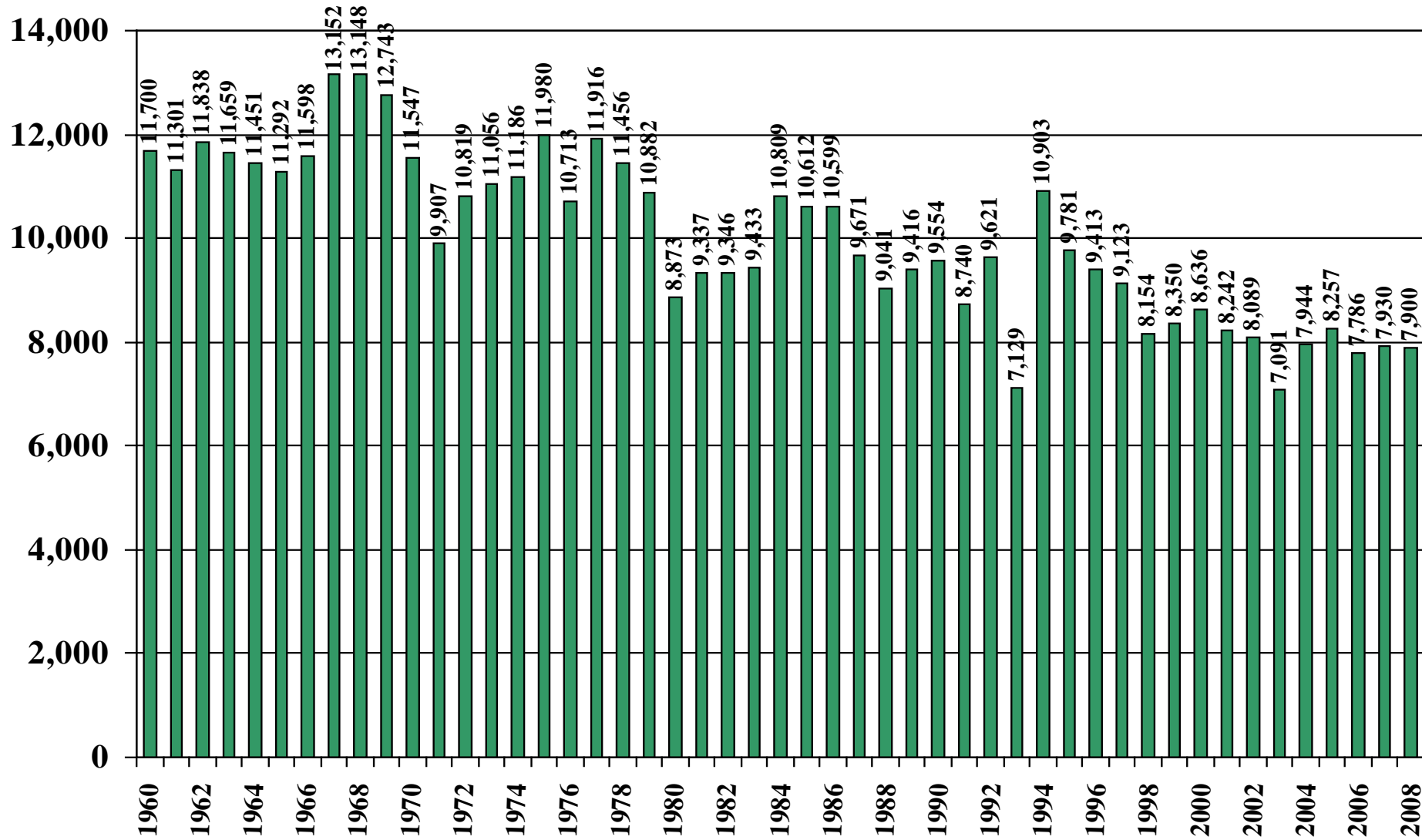
Japan Rice Acreage Harvested 1960/61 – 2008/09



Source: [USDA Foreign Agricultural Service](#)

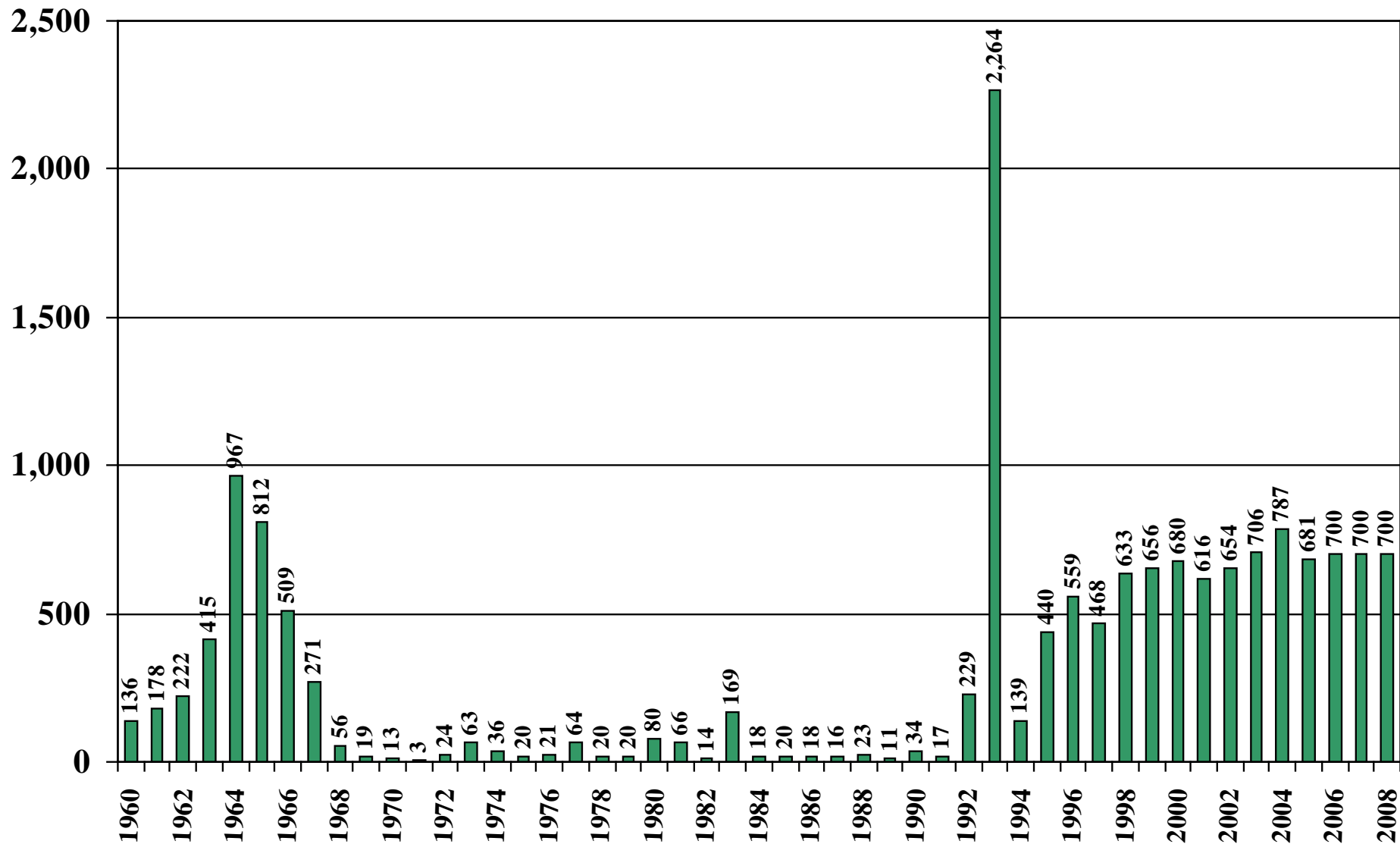
September 2, 2008

Japan Rice Milled Production (1,000 Metric Tons) 1960/61 – 2008/09



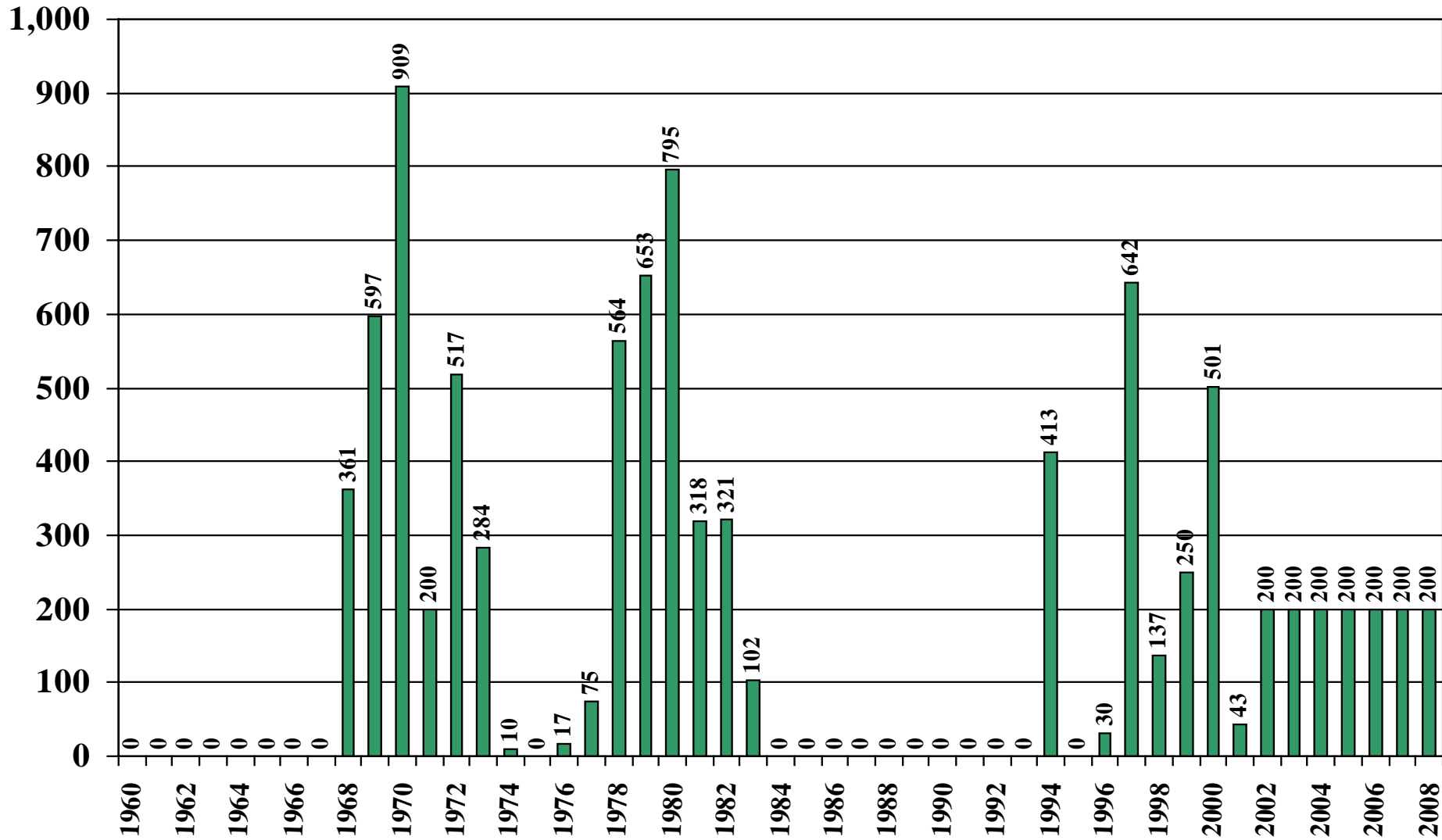
Source: [USDA Foreign Agricultural Service](#)

Japan Rice Jan-Dec Imports (1,000 Metric Tons) 1960/61 – 2008/09



Source: [USDA Foreign Agricultural Service](#)

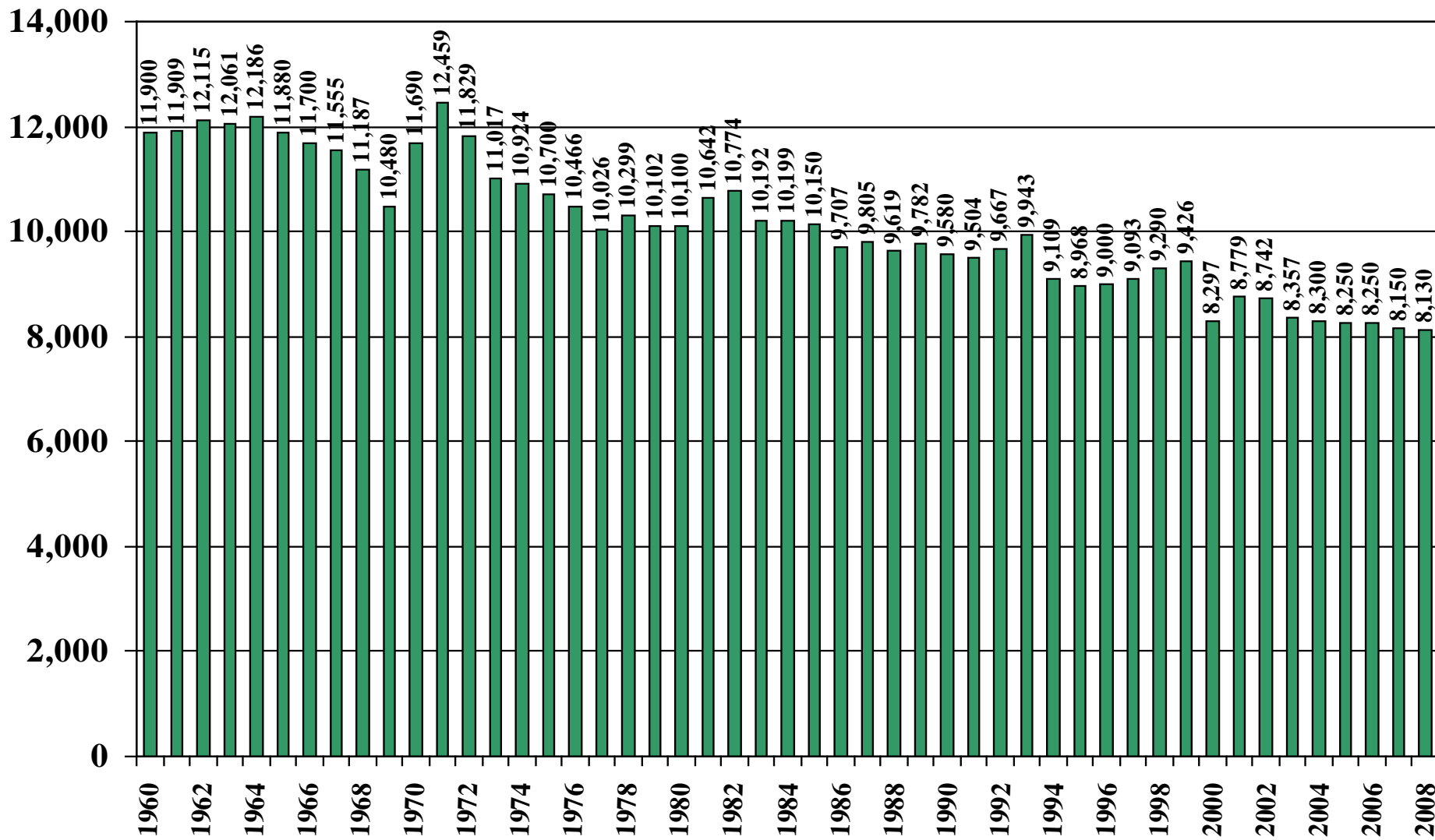
Japan Rice Jan-Dec Exports (1,000 Metric Tons) 1960/61 – 2008/09



Source: [USDA Foreign Agricultural Service](#)

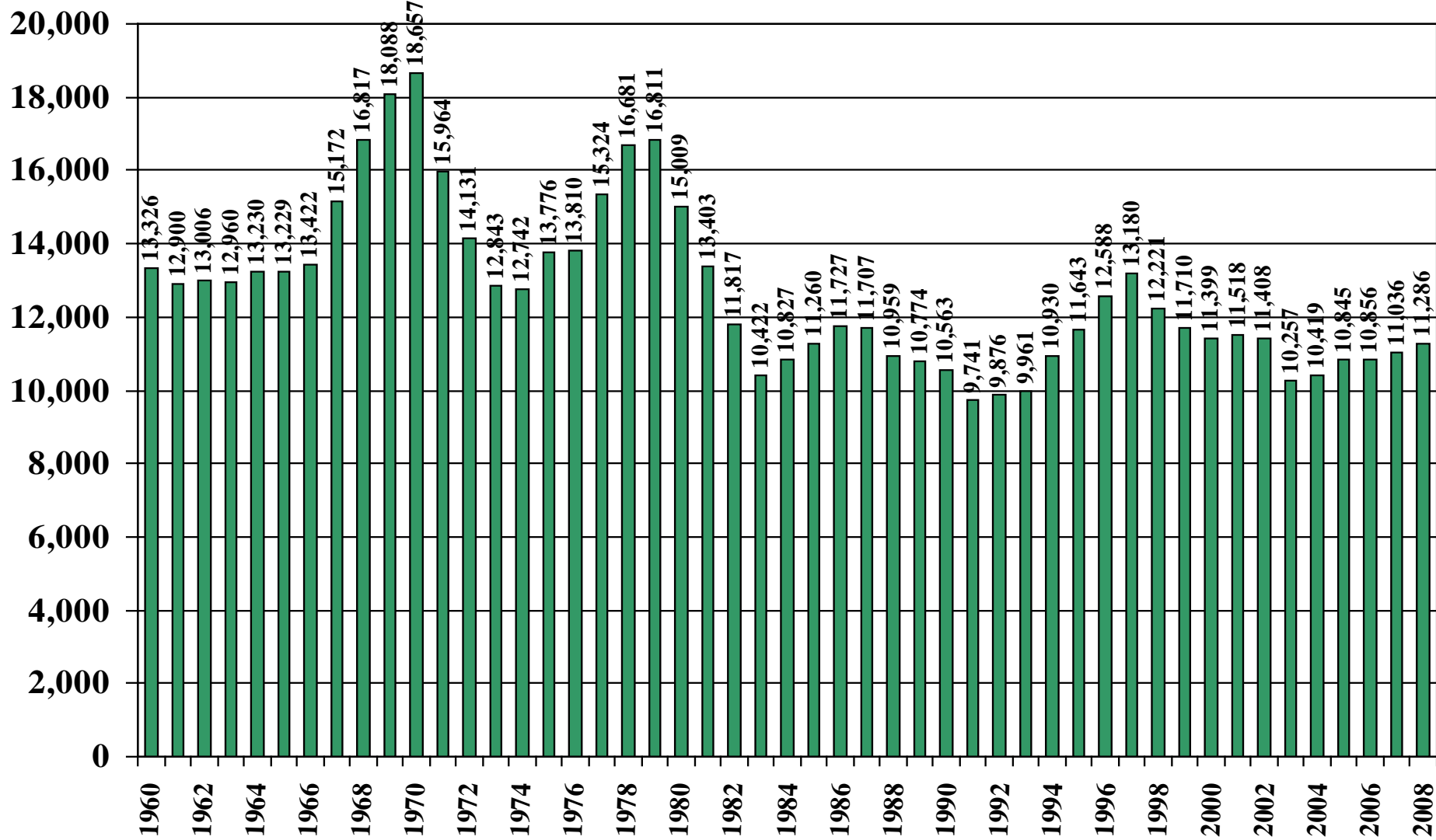
September 2, 2008

Japan Rice Total Domestic Consumption (1,000 Metric Tons) 1960/61 – 2008/09



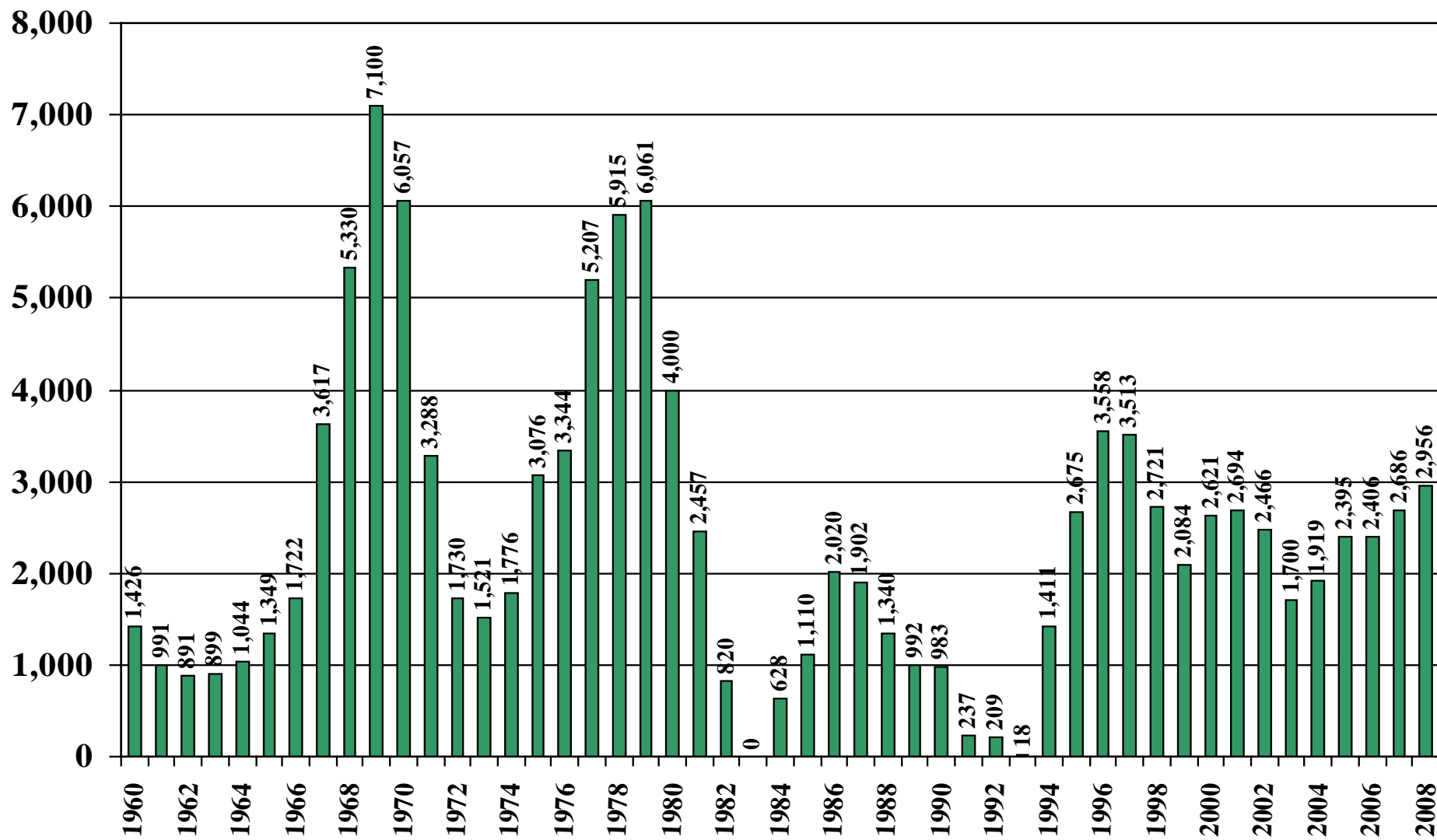
Source: [USDA Foreign Agricultural Service](#)

Japan Rice Total Distribution (1,000 Metric Tons) 1960/61 – 2008/09



Source: [USDA Foreign Agricultural Service](#)

Japan Rice Ending Stocks (1,000 Metric Tons) 1960/61 – 2008/09



Source: [USDA Foreign Agricultural Service](#)